

Duplex printing for a flyer

Front

Align A4 landscape
top 20 mm
left 20 mm

Paper A3 landscape

Binding short edge

Scale 100%

Adjust relative shift
by printer menu

X	+0.00 mm
Y	+0.75 mm
Duplex X	+0.00 mm
Duplex Y	+0.00 mm

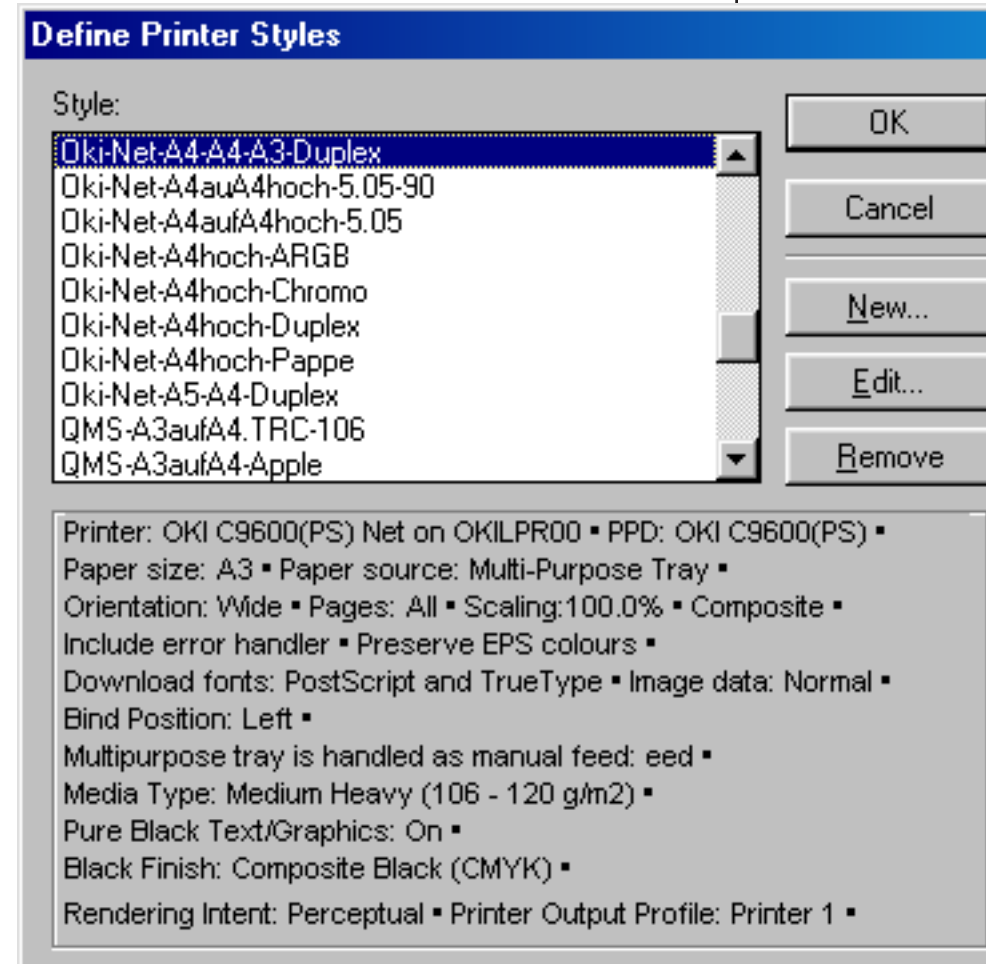
Color area with bleed

Duplex printing for a flyer

Back

Align A4 landscape
top 20 mm
right 20 mm

G.Hoffmann
October 15 / 2006



Color area with bleed