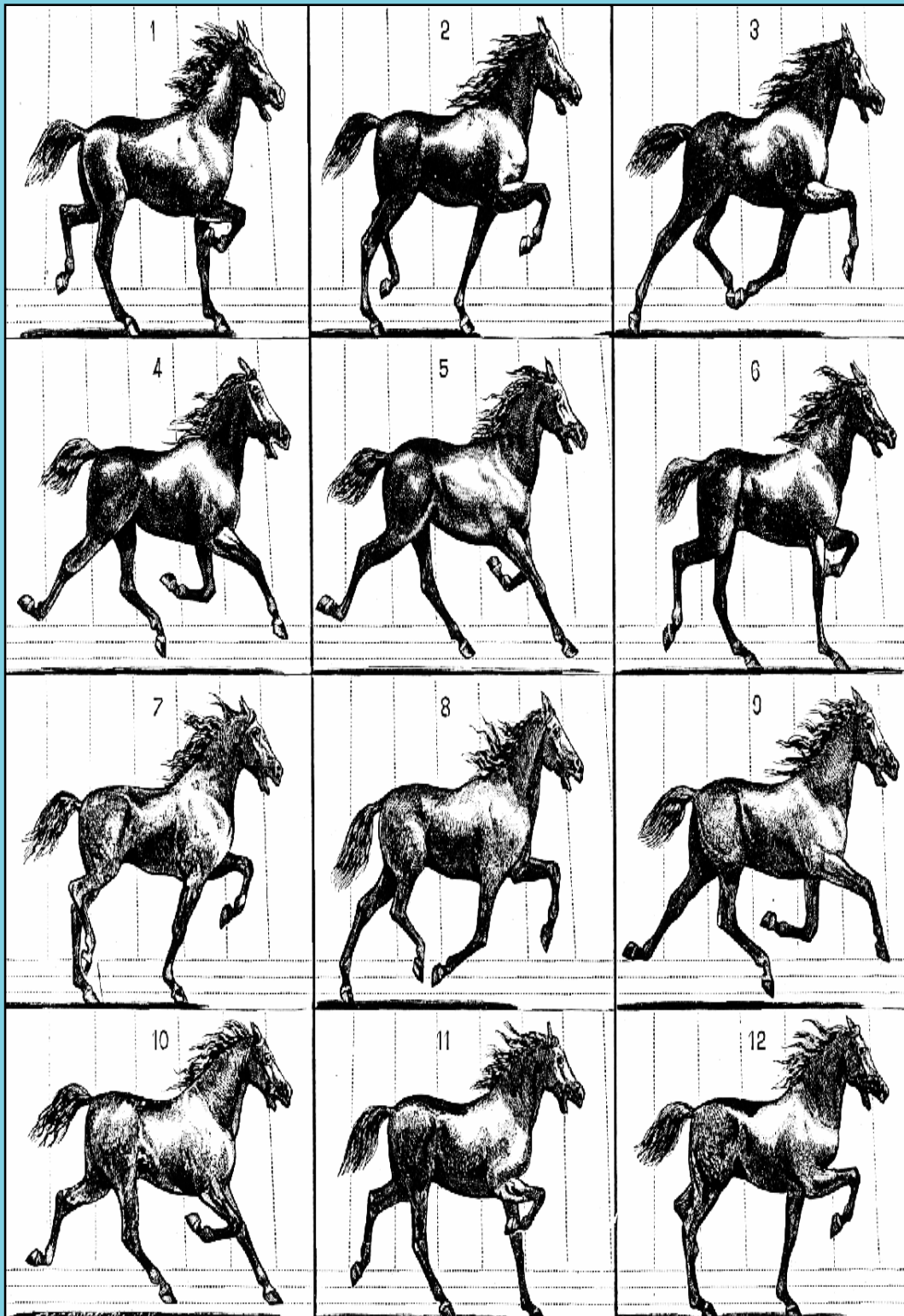


Gernot Hoffmann
HyperDemo

Masterpages and Hyperlinks
for PageMaker



HyperDemo

Editorial

Many PageMaker users have difficulties with the application of Masterpages and Hyperlinks for PDF documents. This guide can help to understand the structure of brochures.

Thanks to Dave Saunders,
member of the Adobe User to User Forum for PageMaker.

Further recommendations are appreciated.
Refer also to „Link Automatismus“.

Front cover: Scientific American, 1878
Page 13: Author
Back cover: Author

December 11, 2000; April 11, 2001, March 17, 2002

Prof.Dr.G.Hoffmann
FH OOW
Dept. of Mechanical Engineering
Constantiaplatz 4
D-26723 Emden
Germany

hoffmann@fho-emden.de
Tel +49 (0)180 567 807 1341
Tel +49 (0)4921 28584 private
Fax +49 (0)4921 996954 private
[http:// www.fho-emden.de /~hoffmann](http://www.fho-emden.de/~hoffmann)

Fachhochschule Oldenburg / Ostfriesland / Wilhelmshaven
University of Applied Sciences

HyperDemo

Contents

Front Cover	Page 1
Editorial	Page 2
Contents	Page 3
Printers	Page 4
Documents with Masterpages	Page 5
About Masterpages	Page 6
Preparation for Hyperlinks	Page 7
Left Masterpage	Page 8
Right Masterpage	Page 9
Link Automatism	Page 10
Defining Hyperlinks 1	Page 11
Defining Hyperlinks 2	Page 12
Index	Page 13
Back Cover	Page 14

HyperDemo Printers

In File / Page Settings assign your favourite desktop printer, the type and dots per inch.

This setting is relevant in very rare cases:

- For Bitmaps which consist already of raster cells, like newspaper print. Then use „MagicStretch“.
- If you have troubles with the text kerning. Sometimes the layout depends on the setting. Attention: the PPD defines the resident fonts.

Distilling for PDF:

Any Postscript Printer must be installed even then, when not printer is physically present.

The Acrobat Distiller distills by default to Screen, using ADistill.PPD. Then none of the assigned printers has any influence on the distilling.

Halftone images are compressed JPEG medium by default. The PDF file can be printed by any printer with local quality, and the quality depends on the image sources and the compression ratio too.

Printing a page with thumbnails by PageMaker:

This works only with pages in one file.

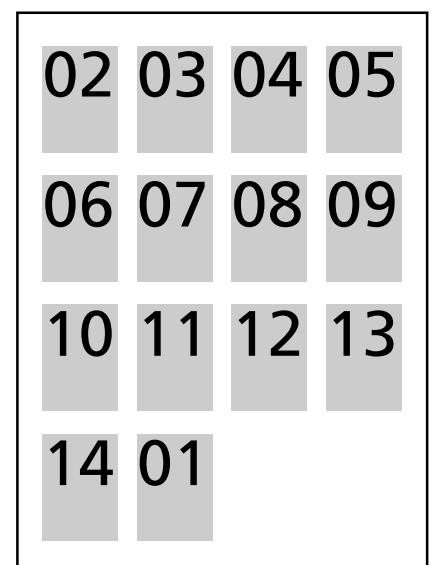
Select in the Printer Control Panel

File / Pages	File / Size
0 All	0 100%
	0 Scale
X Pages = 1-14	X Thumbnails = 16

Correct facing of the pages for thumbnails:

Add one page No. 15. Copy the content of the Front Cover to this page and select Pages = 2-15.

Printing this brochure by a Non-Postscript printer may show hidden elements, mainly on the cover pages.



HyperDemo

Documents with Masterpages

Open a new document A4 portrait.

Assign „Double-sided“, „Non- facing Pages“.


Assign page borders, here 12,12,12,12.

Select „Save Smaller“.

Select „High Resolution Graphics“.

Add 13 similar pages, using Layout.

Bottom left you will see L and R.

 Click R and edit Masterpage for right pages, odd numbers.

Click L and edit Masterpage for left pages, even numbers.

The Masterpages are automatically assigned to all pages.

Make any common change only in Masterpages.

Put white rectangle on front cover and make any new graphic.

Put white rectangle on back cover and make any new graphic.

On page 1 to 14 make eventually an invisible full page frame on a second layer.

This is a good base for copying the whole content precisely to other pages.

HyperDemo

About Masterpages

The content of Masterpages is visible on all other pages, but here it cannot be edited.

It is not possible to assign anchors to Masterpages. This is quite clear, because anchors are targets for jumps.

It is possible to assign sources to Masterpages. Here „Index“ and „Contents“ are common to each page.

We define on Masterpages two kinds of placeholders, the Visible Anchor Areas (VAA, red)) and the Visible Source Areas (VSA, green).

They should be considered as recommendations, where to place anchors and sources on the pages.

Permanent color bars, e.g. for Page, Index and Contents, must be defined on the Masterpages.

The text is on top of the stack, next level is the color.

It is not possible to show the page numbers on individual page colors or images. In these cases simply copy the page placeholder from the Masterpage to the actual page on top of the stack.

Can we assign these Masterpages to an already existing document ? No, this is impossible.

Copy this document with a new name into a new folder. Delete all pages. Add new pages. Copy the content of the existing document page by page on the new empty pages.

This is also the procedure for starting a new document based on existing Masterpages.

HyperDemo

Preparation for Hyperlinks

Define in the Masterpages the small colored rectangles (next pages).

Finally the rectangles are made invisible by no stroke, bordercolor = none. .

The red rectangles are anchor areas, here called „Visible Anchor Area = VAA“, but so far not anchors.

These can be placed anywhere on the page, but then the test in Pagemaker applies strong shifts. For single pages place the VAAs in the center, like in this example.

If the PDF document should be shown by facing double pages then place the VVAs vertically in the center and horizontally near to the right edge of the left page and vice versa.

The green rectangles are source areas, here called „Visible Source Area =VSA“, but so far not sources.

Make a copy of the red rectangle.

Select bordercolor = none.

This is a „Non-visible Anchor Area = NAA“.

Copy the NAA on all pages on the red VAA.

HyperDemo

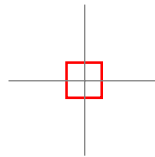
Left Masterpage

A4 210 x 297 mm

A rectangle is used as an Anchor = Target
Here we define the Visible Anchor Area (VAA)
5 x 5 mm

Always fillcolor = none
Here bordercolor = red
Finally bordercolor = none

Center at 105, 148.5



Center of the page
105, 148.5

Why is the VAA positioned in the center of the page ?
This guarantees in Page-Maker tests, that the new page is shown centered.
The VAA is always in the center of monitor.
For the PDF version any VAA on the page would do the job.

Two rectangles are used as Sources = Buttons

Here we define the Visible Source Areas (VSA)

The text itself could be used too, but the VSA can be made larger

Each 50 x 10 mm

Always fillcolor = none
Here bordercolor = green
Finally bordercolor = none

Page number placeholder by Control+Shift+3 or Control+Alt+P

Top center at 105, 275

Top right 198, 275

HyperDemo

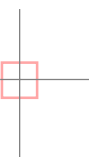
Right Masterpage

A4 210 x 297 mm

Is it always reasonable to position the VAA in the center of the page ?

No. For facing pages you may want to show the left page left and the right page right.

Then the VAA on the right page should be at the left side, and vice versa.

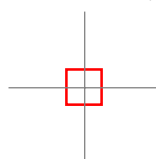


A rectangle is used as an Anchor = Target
Here we define the Visible Anchor Area (VAA)

5 x 5 mm

Always	fillcolor	= none
Here	bordercolor	= red
Finally	bordercolor	= none

Center at 105, 148.5



Center of the page
105, 148.5

Two rectangles are used as Sources = Buttons
Here we define the Visible Source Areas (VSA)

The text itself could be used too, but the VSAs can be made larger

Each 50 x 10 mm

Always	fillcolor	= none
Here	bordercolor	= green
Finally	bordercolor	= none

Page number placeholder by Control+Shift+3 or Control+Alt+P

Top left at 12, 275

Top center at 105, 275

Contents

Index

Page 9

HyperDemo

Link Automatism

Table of Contents and Table of Index entries (TOC and TOI) can be generated automatically.

Then the associated links should be generated automatically too.

This needs much experience and causes sometimes surprising results.

Therefore we don't use automatism here.

Tables of Contents can be easily written by hand, but the Tables of Index must be generated automatically in the long run.

HyperDemo

Defining Hyperlinks 1

Assign anchors to the centered NAAs, here „anchor01“ ... „anchor14“ .

Click on Page 3 on Line 1
Jump to Page 1

Mark on page 3 the first content line.
Select „anchor01“. Click on anchor icon and assign source „Goto01“ by rename.

Click on Page 3 on Line 2
Jump to Page 2

Mark on page 3 the second content line.
Select „anchor02“. Click on anchor icon and assign the source „Goto02“.
Do not assign the content page itself.
Thus continue:

Click on Page 3 on Line 4
Jump to Page 4

Mark on page 3 the fourth content line.
Select „anchor04“. Click on anchor icon and assign the source „Goto04“.

Continue to the last page.

Click on Page on Contents
Jump to Page 3

Mark on left MP the Contents VSA.
Select „anchor03“. Click on anchor icon and assign source „Contents Left“.

Click on Page on Contents
Jump to Page 3

Mark on right MP the Contents VSA.
Select „anchor03“. Click on anchor icon and assign source „Contents Right“.

Click on Page on Index
Jump to Page 13

Mark on left MP the Index VSA.
Select „anchor13“. Click on anchor icon and assign source „Index Left“.

Click on Page on Index
Jump to Page 13

Mark on right MP the Index VSA.
Select „anchor13“. Click on anchor icon and assign source „Index Right“.

Use the Hand icon for test of Hyperlinks.

HyperDemo

Defining Hyperlinks 2

Mark on page 1 the title image.
Select „anchor02“. Click on anchor icon
and assign source „Intro01“ by renaming.

Click on Page 1 on Front Image
Jump to Page 2

Mark on page 14 the back image.
Select „anchor01“. Click on anchor icon
and assign source „Extro14“.
Instead of a back image a large NSA can
be used.

Click on Page 14 on Back Image
Jump to Page 1

Mark on Index page 13 the first reference.
Select „anchor##“. Click on anchor icon
and assign source „Refer01“.
means the page, to which the jump
should be executed.

Click on Page 13 on Line 1
Jump to Page ##

Mark on Index page 13 the sec. reference.
Select „anchor##“. Click on anchor icon
and assign source „Refer02“.
Continue to the last reference item.

Click on Page 13 on Line 2
Jump to Page ##

Define two URLs (Control Box „New URL“):
„mailto:hoffmann@fho-emden.de“

Mark text on page 2, assign source „Email“.

„http://www.fho-emden.de/~hoffmann“.

Mark text on page 2, assign source „Intern“.

The text on page 2 is nothing but the source
area. Could be „Contact me“ and „Here is
my homepage“ as well.

Click on Page 2 to hoffmann@..
Jump to Email Editor

Click on Page 2 to http://www..
Jump to Internet URL

It's not compulsory to rename
anchors and sources.

Finally set on both Masterpages

bordercolor = none

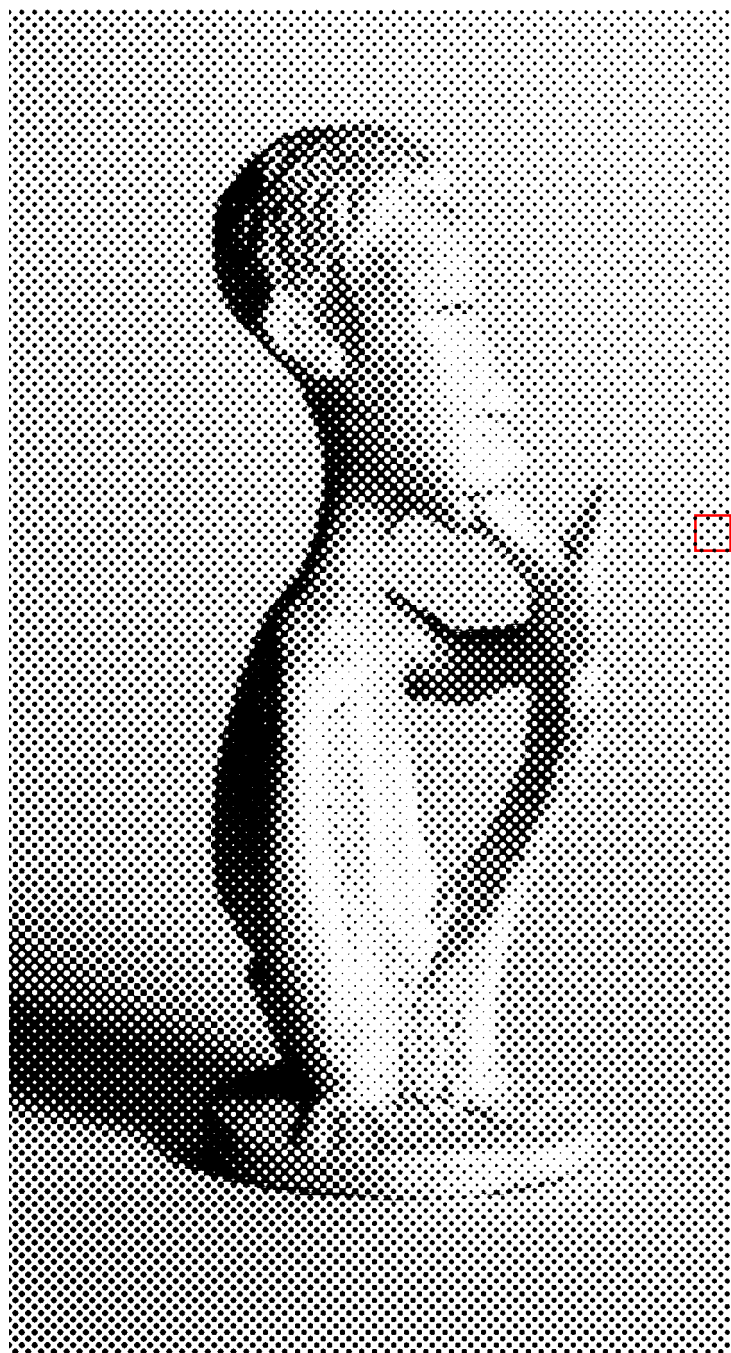
for all VAAs and VSAs.

(for didactical purposes: here still visible)

HyperDemo

Index

A test for „MagicStretch“ 300dpi / 22 lpi
Printable precisely with 300 / 600 / 1200 dpi



- 1 Anchor
- 2 Anchor Area
- 3 Automatism
- 4 Bordercolor
- 5 Center of the Page
- 6 Double Sided Pages
- 7 Fillcolor
- 8 Hoffmann
- 9 Hyperlink
- 10 MagicStretch
- 11 Masterpage
- 12 NAA
- 13 NSA
- 14 Non-facing Pages
- 15 Rectangles
- 16 Saunders
- 17 Scientific American
- 18 Source
- 19 Source Area
- 20 Table of Contents
- 21 Table of Index
- 22 VAA
- 23 VSA

Keep the numbers in a second Layer. Mark „hidden“ before application of the Distiller.

HyperDemo

